



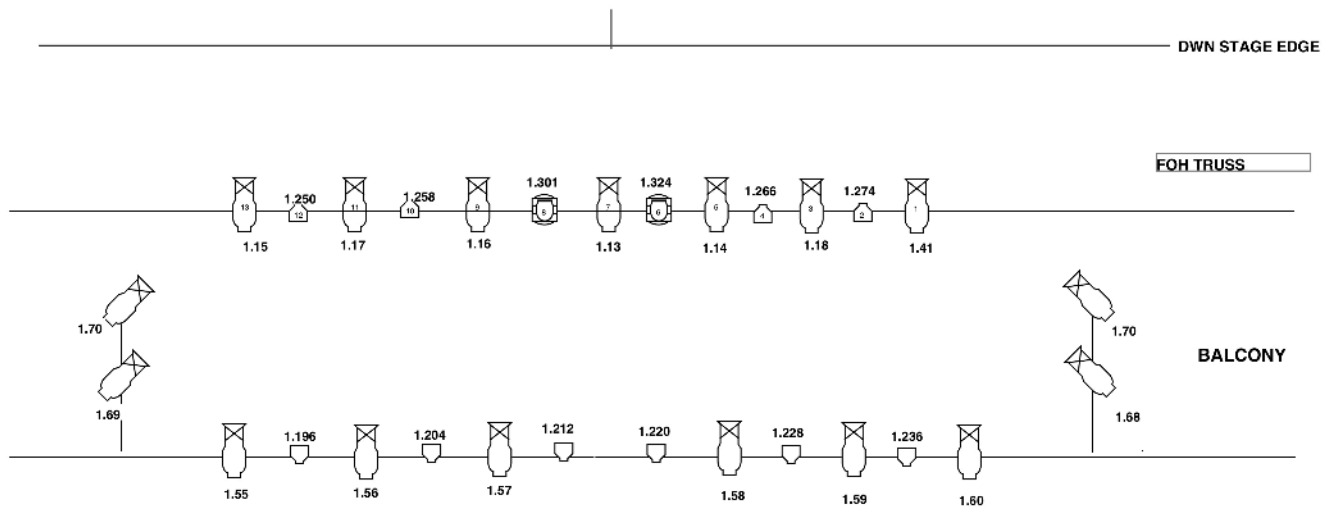
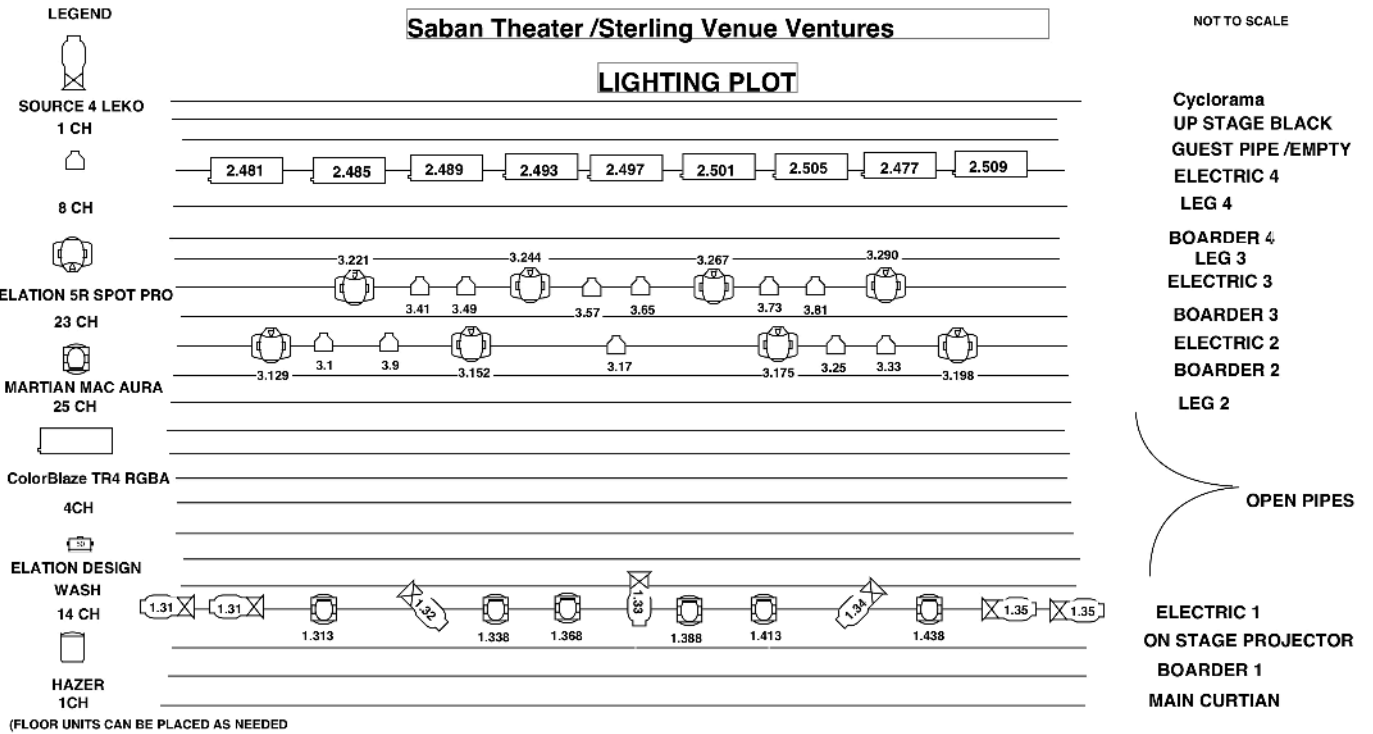
SABAN THEATER, BEVERLY HILLS TECHNICAL SPECIFICATIONS

Asset	Description	Locations	Quantity	Category
Audio System				
Audio FOH Mixing Board	Yamaha CL 5 multi-channel board	FOH Booth	1	Production Audio
Dante Rack	Rio input rack, digital Box 32x16	Stage left	1	Production Audio
Dante Rack	Rio input rack, digital Box 16x8	Stage left	1	Production Audio
House P.A.	McCauley MLA3 Monarc 3-way line Arrays(8 left/8 right)	Flown Down Stage	16	Production Audio
	12x 1 Boxes For UpperBalcony Fill	Flown Rear Balcony	3	Production Audio
	Subwoofers EAW 1001	Under Stage	4	Production Audio
FOH Front fill Speakers	Line 6 – 2 way powered speaker	Down Stage Edge	4	Production Audio
FOH Main Snake	Cat 5 cable	Under Stage	1	Production Audio
FOH Front fill loom	100' power and XLR audio cable for power and signal input	Under Stage	1	Production Audio
FOH sub mixer for video audio	Mackie 8-channel stereo mixer	FOH Booth	1	Production Audio
Microphones	Sm 58 vocal mic	Audio case in Front Office	14	Production Audio
Microphones	Sm 57 instrument mic	Audio case in Front Office	11	Production Audio
Microphones	Beta 52 drum mic	Audio case in Front Office	1	Production Audio
Microphones	Sennheiser 604 drum mic	Audio case in Front Office	3	Production Audio
Microphones	Sm 81 condenser mic	Audio case in Front Office	3	Production Audio
Audio Stage Monitor System				
Stage Monitor Mixer	Yamaha CL 3 48-CH digital mixer	Stage left	1	Production Audio

Stage Monitor Speakers	Qsc k12 powered stage speaker	Audio Room Lower	6	Production Audio
Stage Monitor Speakers	Woodworks JBL 2x12 passive stage speaker	Upstage Behind All Black	9	Production Audio
Stage Monitor Speakers	Woodworks JBL 1x12 passive stage speaker	Upstage Behind All Black	4	Production Audio
Stage Monitor power amps	Crown Xti 2000 power amps for passive stage speaker	Stage left	9	Production Audio
Stage input snake	Whirlwind 16x4 100' stage snake	Stage left	1	Production Audio
Stage input snake	Whirlwind 16x4 50' stage snake	Stage left	1	Production Audio
Stage input snake	Whirlwind 8x4 50' stage snake	Stage left	2	Production Audio
Audio Cabling	NL4 Monitor Speaker cables 25' 50'	Audio Room Lower	12	Production Audio
Audio Cabling	NL4 Monitor Speaker cables 5' 10'	Audio Room Lower	10	Production Audio
Audio Cabling	XLR Audio cables 25' 50'	Audio Room Lower	58	Production Audio
Audio Cabling	XLR Audio cables 5' 15'	Audio Room Lower	26	Production Audio
Audio Cabling	20a 125v Edison Power cables with quad boxes	Audio Room Lower	4	Production Audio
Audio Cabling	20a 125v Edison Power extension cables	Audio Room Lower	16	Production Audio
Audio Cabling	20a 125v Edison Power cable quad boxes stingers	Audio Room Lower	4	Production Audio
Direct injection boxes	Whirlwind Imp2 Di's plus Behringer active di's	Office case	12	Production Audio
Production Lighting	Production Lighting			
Lighting Desk	Grand MA 2 lite	FOH Booth	1	Production Lighting
Fixture Production Lighting	Elation Platinum Spot 5r	Hung on stage	12	Production Lighting
Fixture Production Lighting	Source 4 leko Barrels	Hung From Truss Balcony line sets	39	Production Lighting
Fixture Production Lighting	Source 4 leko Lenses 10*19*26*36*50*	Hung From Truss Balcony line sets	40	Production Lighting
Fixture Production Lighting	Elation Sixpar 200 ip	Hung on stage proscenium	40	Production Lighting
Lighting Arcnet system	Cat 5 wiring Dmx base with 6 nodes	stage Right Lighting room	1	Production Lighting

Lighting Opti Splitter	Chauvet DMX-512 opti Split	Stage Right Crows Nest	3	Production Lighting
Lighting Cables	5 Pin DMX	Stage Right Lighting room	35	Production Lighting
Lighting Cables	XLR 200' DMX FOH to Stage data	Under Stage	4	Production Lighting
Lighting Cables	XLR DMX 25' 50' 100'	Stage Right lighting Room	74	Production Lighting
Lighting Cables	Edison power cables 100'	Stage Right Lighting room	10	Production Lighting
Lighting Cables	Edison power cables 50'	Stage Right Lighting room	14	Production Lighting
Lighting Cables	Edison power cables 12' 25'	Stage Right Lighting room	26	Production Lighting
Lighting Power breaker box	17 breaker 20a Edison power breakout box with Edison tails	Stage Right Lighting room	1	Production Lighting
Power breaker box distro	12 breaker 20a Edison power breakout box with Edison tails	Stage Left	1	Production Audio
Video Projector	Dell	Down Stage Hung on line set	1	Video
Video Projector	Panasonic PT-D4000u	Balcony Rail	1	Video
Piano	7' Grand Piano - Yamaha	Stage Left Piano box	1	Backline
Mic stands	tall boom stands	Audio room lower	10	Production Audio
Mic stands	short boom stands	Audio Room Lower	6	Production Audio
Mic stands	straight stand	Audio Room Lower	8	Production Audio
Music stands	Manhasset concert music stands	Audio Room Lower	16	Production Audio
Guitar stands	neck supported and body supported	Audio Room Lower	6	Production Audio
Stage rugs	heavy 5x7 Persian rug design	Audio room Lower	10	
ladder	14' A-frame step ladder	Up Stage Behind All Black	1	
Main Movie Screen Projector				
Projector Specifications	Christie Solaria Series CP4220 4K 22.000 lumens projector Input to Christie Projector is CRU Sled, HDMI & DVI			
	Brightness: 22,000			

	Lumens within DCI color space			
	Technology: Series 2 DLP Cinema			
	Resolution: 4096 x 2160 (4k)			
	Power Supply: Single phase 220V			
	Motorized lens mount			
	Weight: 245 lbs. (111 kg)			
	Lens			
	Custom-designed Xenon lamp			



COUNTERWEIGHT SYSTEM

Linesets (single purchase) Total number of Linesets 46 Number of usable Linesets 40 Batten length 53'2"

Arbor Capacity 1670-2000 lbs.

(See Lineset Schedule on next page for individual arbor maximum weights) Distance between Linesets 6"

Fly Rail (Located Stage Right) Number of Linesets from stage floor 34

Number of Linesets from crow's nest 12

Height of crow's nest above stage 9'8"

Rigging Points

There are five (5) established rigging points in the auditoriumThree (3) that hold the removable FOH lighting truss

One (1) on each side of proscenium to hold audio line arrays

Additional locations for auditorium points are possible and are approved on a case-by-case basis.

There is 4500 lbs of usable counterweight in the theater.

	House Lineset Schedule
LINESET	Linesets are 6" on Center
1	Main teaser
1a	Main Curtain
2	1st Legs (19' from Center)
3	Cinema Screen
4	Open
5	Open
6	Open
7	1st Electric (movers and Tail Down)
8	Open
9	2nd Teaser
10	2nd Legs (19' from Center)
11	Open
12	Open
13	Open
14	Open
15	Open
16	Open
17	3rd Teaser
18	3rd Legs (19' from Center)
19	2nd Mover Pipe
20	Open
21	Open
22	Open
23	Open
24	4th Teaser
25	Dead (Not Useable)
26	2nd Electric (Leko Lights)
27	4th Legs
28	Open
29	Open
30	Open
31	3rd Mover Pipe
32	Open
33	5th Teaser
34	Temple Set Walls

35	5th Legs (19' from Center)
36	3rd Electric (Up Stage Par Bars)
37	Open
38	Open
39	Temple Set Upstage Header (Where Temple set is stored)
40	Open
41	Open
42	Snap On Screen
43	Temple Backdrop
44	Full Stage Black
45	Full Stage White
46	Open

DRESSING ROOMS

Access to dressing rooms is through the door stage right.

2 x Star Dressing Rooms

These include private bathrooms and showers

2 x Small Dressing Rooms (4 people)

These do NOT include private bathrooms and showers

3 x Chorus Dressing Rooms (10-12 people)

These do NOT include private showers or bathrooms

Bathrooms for small and chorus dressing rooms are in the hallway. Each contains a shower.

Wardrobe Room

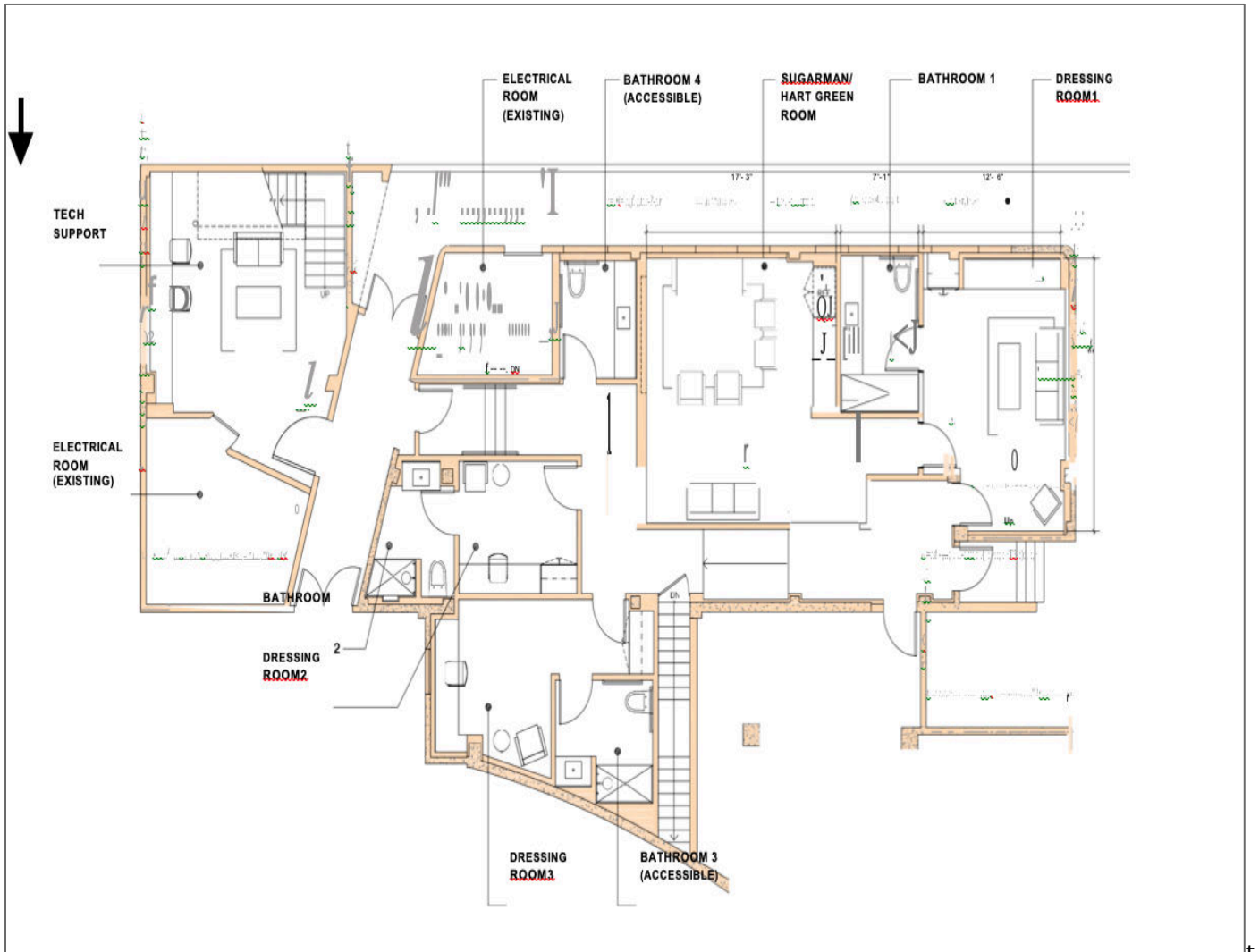
Wardrobe is typically located in a multi-purpose room that measures 14' x 16'.

The washers and dryers are accessed by stairs in the wardrobe room. The venue has two (2) washers and two (2) dryers. The washer/dryer room is 9'6" x 13'. This can also be used for wardrobe if necessary.

2 x Steamers

3 x Irons

DRESSING ROOM MAP



Stage right entrance

