



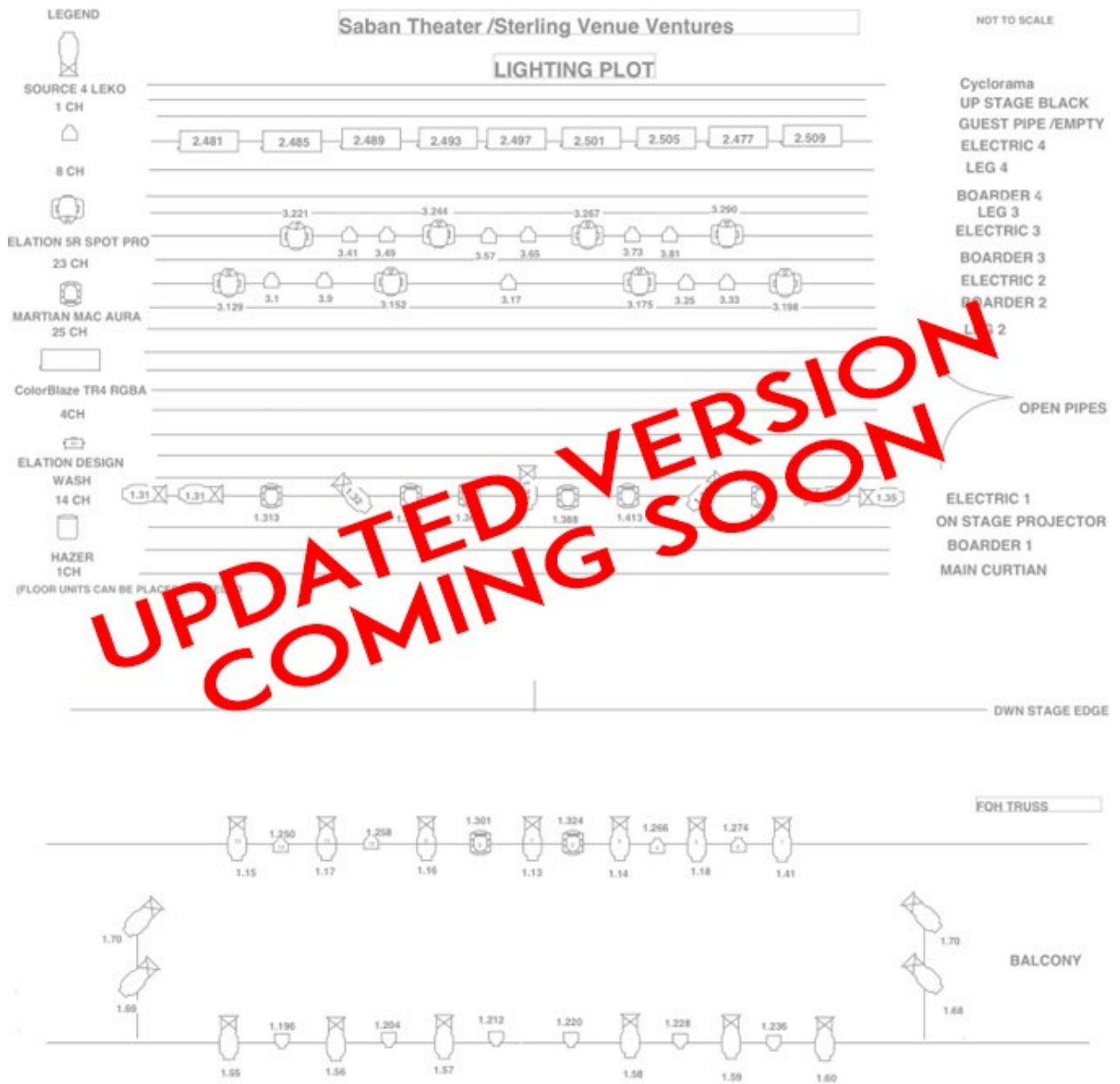
# SABAN THEATER, BEVERLY HILLS

## TECHNICAL SPECIFICATIONS

ASSET	DESCRIPTION	LOCATIONS	QTY	CATEGORY
AUDIO SYSTEM				
AUDIO FOH MIXING BOARD	YAMAHA CL 5, MULTI-CHANNEL BOARD	FOH BOOTH	1	PRODUCTION AUDIO
DANTE RACK	RIO INPUT RACK, DIGITAL BOX 32X16	STAGE LEFT	1	PRODUCTION AUDIO
DANTE RACK	RIO INPUT RACK, DIGITAL BOX 16X8	STAGE LEFT	1	PRODUCTION AUDIO
HOUSE P.A.	JBL VTX SERIES V20 LINE ARRAY (8 LEFT - 8 RIGHT)	FLOWN DOWN STAGE	16	PRODUCTION AUDIO
HOUSE DELAY SPEAKERS	12X 1 BOXES FOR UPPERBALCONY FILL	FLOWN REAR BALCONY	3	PRODUCTION AUDIO
HOUSE SUBWOOFERS	SUBWOOFERS EAW SB1001	UNDER STAGE	4	PRODUCTION AUDIO
FOH FRONT FILL SPEAKERS	LINE 6 - 2 WAY POWERED SPEAKER	DOWN STAGE EDGE	2	PRODUCTION AUDIO
FOH MAIN SNAKE	CAT 5 CABLE	UNDER STAGE	1	PRODUCTION AUDIO
FOH FRONT FILL LOOM	100' POWER AND XLR AUDIO CABLE FOR POWER AND SIGNAL INPUT	UNDER STAGE	1	PRODUCTION AUDIO
MICROPHONES	SM 58 VOCAL MIC	AUDIO CASE IN FRONT OFFICE	14	PRODUCTION AUDIO
MICROPHONES	SM 57 INSTRUMENT MIC	AUDIO CASE IN FRONT OFFICE	11	PRODUCTION AUDIO
MICROPHONES	BETA 52 DRUM MIC	AUDIO CASE IN FRONT OFFICE	1	PRODUCTION AUDIO
MICROPHONES	SENNHEISER 604 DRUM MIC	AUDIO CASE IN FRONT OFFICE	3	PRODUCTION AUDIO
MICROPHONES	SM 81 CONDENSER MIC	AUDIO CASE IN FRONT OFFICE	3	PRODUCTION AUDIO
AUDIO STAGE MONITOR SYSTEM				
STAGE MONITOR MIXER	YAMAHA CL 3 48-CH DIGITAL MIXER	STAGE LEFT	1	PRODUCTION AUDIO
STAGE MONITOR SPEAKERS	QSC K12 POWERED STAGE SPEAKER	AUDIO ROOM LOWER	6	PRODUCTION AUDIO

STAGE MONITOR POWER AMPS	CROWN XTI 2000 POWER AMPS FOR PASSIVE STAGE SPEAKER	STAGE LEFT	5	PRODUCTION AUDIO
STAGE INPUT SNAKE	WHIRLWIND 16X4 100' STAGE SNAKE	STAGE LEFT	1	PRODUCTION AUDIO
STAGE INPUT SNAKE	WHIRLWIND 16X4 50' STAGE SNAKE	STAGE LEFT	1	PRODUCTION AUDIO
STAGE INPUT SNAKE	WHIRLWIND 8X4 50' STAGE SNAKE	STAGE LEFT	2	PRODUCTION AUDIO
AUDIO CABLING	NL4 MONITOR SPEAKER CABLES 25' 50'	AUDIO ROOM LOWER	12	PRODUCTION AUDIO
AUDIO CABLING	NL4 MONITOR SPEAKER CABLES 5' 10'	AUDIO ROOM LOWER	10	PRODUCTION AUDIO
AUDIO CABLING	XLR AUDIO CABLES 25' 50'	AUDIO ROOM LOWER	58	PRODUCTION AUDIO
AUDIO CABLING	XLR AUDIO CABLES 5' 15'	AUDIO ROOM LOWER	26	PRODUCTION AUDIO
AUDIO CABLING	20A 125V EDISON POWER CABLES WITH QUAD BOXES	LOWER AUDIO	4	PRODUCTION AUDIO
AUDIO CABLING	20A 125V EDISON POWER EXTENSION CABLES	AUDIO ROOM LOWER	16	PRODUCTION AUDIO
AUDIO CABLING	20A 125V EDISON POWER CABLE QUAD BOXES STINGERS	AUDIO ROOM LOWER	4	PRODUCTION AUDIO
DIRECT INJECTION BOXES	WHIRLWIND IMP2 DI'S PLUS BEHRINGER ACTIVE DI'S	OFFICE CASE	12	PRODUCTION AUDIO
POWER BREAKER BOX DISTRO	12 BREAKER 20A EDISON POWER BREAKOUT BOX WITH EDISON TAILS	STAGE LEFT	1	PRODUCTION AUDIO
PRODUCTION LIGHTING				
LIGHTING DESK	GRAND MA 2 LITE	FOH BOOTH	1	PRODUCTION LIGHTING
FIXTURE PRODUCTION LIGHTING	ELATION PLATINUM SPOT 5R	HUNG ON STAGE	6	PRODUCTION LIGHTING
FIXTURE PRODUCTION LIGHTING	SOURCE 4 LEKO BARRELS	HUNG FROM TRUSS BALCONY LINE SETS	39	PRODUCTION LIGHTING
FIXTURE PRODUCTION LIGHTING	SOURCE 4 LEKO LENSES 10*19*26*36*50*	HUNG FROM TRUSS BALCONY LINE SETS	20	PRODUCTION LIGHTING
FIXTURE PRODUCTION LIGHTING	ELATION SIXPAR 200 IP	HUNG ON STAGE PROSCENIUM	17	PRODUCTION LIGHTING
FIXTURE PRODUCTION LIGHTING	ELATION RAYZOR BEAM 2R	HUNG ON STAGE	4	PRODUCTION LIGHTING
FIXTURE PRODUCTION LIGHTING	ELIMINATOR LIGHTING LP12HEX	HUNG ON STAGE	7	PRODUCTION LIGHTING
FIXTURE PRODUCTION LIGHTING	ADJ VIZI BEAM 5RX	HUNG ON STAGE	4	PRODUCTION LIGHTING
FIXTURE PRODUCTION LIGHTING	MARTIN RUSH MH1 PROFILE PLUS	HUNG FROM TRUSS	4	PRODUCTION LIGHTING

LIGHTING ARCNET SYSTEM	CAT 5 WIRING DMX BASE WITH 6 NODES	STAGE RIGHT LIGHTING ROOM	1	PRODUCTION LIGHTING
LIGHTING OPTI SPLITTER	CHAUVET DMX-512 OPTI SPLIT	STAGE RIGHT CROWS NEST	3	PRODUCTION LIGHTING
LIGHTING CABLES	5 PIN DMX	STAGE RIGHT LIGHTING ROOM	35	PRODUCTION LIGHTING
LIGHTING CABLES	XLR 200' DMX FOH TO STAGE DATA	UNDER STAGE	4	PRODUCTION LIGHTING
LIGHTING CABLES	XLR DMX 25' 50' 100'	STAGE RIGHT LIGHTING ROOM	74	PRODUCTION LIGHTING
LIGHTING CABLES	EDISON POWER CABLES 100'	STAGE RIGHT LIGHTING ROOM	10	PRODUCTION LIGHTING
LIGHTING CABLES	EDISON POWER CABLES 50'	STAGE RIGHT LIGHTING ROOM	14	PRODUCTION LIGHTING
LIGHTING CABLES	EDISON POWER CABLES 12' 25'	STAGE RIGHT LIGHTING ROOM	26	PRODUCTION LIGHTING
LIGHTING POWER BREAKER BOX	17 BREAKER 20A EDISON POWER BREAKOUT BOX WITH EDISON TAILS	STAGE RIGHT LIGHTING ROOM	1	PRODUCTION LIGHTING
MISCELLANEOUS				
VIDEO PROJECTOR	DELL	DOWN STAGE HUNG ON LINE SET	1	VIDEO
VIDEO PROJECTOR	PANASONIC PT- D4000U	BALCONY RAIL	1	VIDEO
PIANO	7' GRAND PIANO - YAMAHA C7	STAGE LEFT PIANO BOX	1	BACKLINE
MIC STANDS	TALL BOOM STANDS	AUDIO ROOM LOWER	10	PRODUCTION AUDIO
MIC STANDS	SHORT BOOM STANDS	AUDIO ROOM LOWER	6	PRODUCTION AUDIO
MIC STANDS	STRAIGHT STAND	AUDIO ROOM LOWER	8	PRODUCTION AUDIO
MUSIC STANDS	MANHASSET CONCERT MUSIC STANDS	AUDIO ROOM LOWER	16	PRODUCTION AUDIO
GUITAR STANDS	NECK SUPPORTED AND BODY SUPPORTED	AUDIO ROOM LOWER	6	PRODUCTION AUDIO
STAGE RUGS	HEAVY 5X7 PERSIAN RUG DESIGN	AUDIO ROOM LOWER	10	PRODUCTION EQUIPMENT
LADDER	14' A-FRAME STEP LADDER	UP STAGE BEHIND ALL BLACK	1	PRODUCTION EQUIPMENT



## Rigging Points

There are five (5) established rigging points in the auditoriumThree (3)

that hold the removable FOH lighting truss

One (1) on each side of proscenium to hold audio line arrays

Additional locations for auditorium points are possible and are approved on a case-by-case basis.

There is 4500 lbs of usable counterweight in the theater.

	House Lineset Schedule
LINESET	Linesets are 6" on Center
1	Main teaser
1a	Main Curtain
2	1st Legs (19' from Center)
3	Cinema Screen
4	Open
5	Open
6	Open
7	1st Electric (movers and Tail Down)
8	Open
9	2nd Teaser
10	2nd Legs (19' from Center)
11	Open
12	Open
13	Open
14	Open
15	Open
16	Open
17	3rd Teaser
18	3rd Legs (19' from Center)
19	2nd Mover Pipe
20	Open
21	Open
22	Open
23	Open
24	4th Teaser
25	Dead (Not Useable)
26	2nd Electric (Leko Lights)
27	4th Legs
28	Open
29	Open
30	Open
31	3rd Mover Pipe
32	Open
33	5th Teaser
34	Temple Set Walls

35	5th Legs (19' from Center)
36	3rd Electric (Up Stage Par Bars)
37	Open
38	Open
39	Temple Set Upstage Header (Where Temple set is stored)
40	Open
41	Open
42	Snap On Screen
43	Temple Backdrop
44	Full Stage Black
45	Full Stage White
46	Open

## Main Movie Screen Projector

- Projector Specifications: Christie Solaria Series CP4220 4K 22,000 lumens projector Input to Christie
- Projector is CRU Sled, HDMI & DVI"
- Brightness: 22,000 Lumens within DCI color space
- Technology: Series 2 DLP Cinema
- Resolution: 4096 x 2160 (4k)
- Power Supply: Single phase 220V
- Motorized lens mount
- Weight: 245 lbs. (111 kg)
- Lens
- Custom-designed Xenon lamp"

## ADJ VS3 IP 3.84mm Outdoor Rated LED Wall Panel

### Key Features

- IP65 Front / IP54 Back (Temporary outdoor use)
- Corner Protectors to protect the corners of the VS3IP during transport, set-up and teardown
- IP65 rated rubber capped protective connections
- 4 easy to replace video modules on each panel
- Rear carry handles
- Curve panels in convex or concave -6, -3 degrees or 0, +3, +6 degrees
- Quick lock system to connect panels together
- Quick release power supply / receiving card module
- Novastar A5S receiving card

## ADJ VS3 IP 3.84mm Outdoor Rated LED Wall Panel

### Technical Specifications

**Pixel Pitch**

3.84mm (0.15")

**LED Configuration**

3-in-1 SMD1921 LED

**Pixel Density**

150x150 per panel; 67816 per square meter

**Size**

22.7" x 22.7" x 3.00" / 576mm x 576mm x 75mm

**Module Quantity**

4

**Weight**

19.84 lbs. / 9kg.

**MECHANICAL RATINGS****Surface Flatness**

Gaps<0.5mm

**OPTICAL RATINGS****Brightness**

4500 NITS

**View Angle**

Horizontal 160/Vertical 140 @ 9.75 ft. (3m)

**Gray Scale**

14-bit

**Display Color**

256

**Brightness Adjustment**

0~100% 100 Levels

**Contrast ratio**

5000:1

**Processing**

14-bit

**POWER SUPPLY****Operation Power**

100~240V 50-60Hz

**Max. Power Consumption**

210W/per panel

**Ave. Power Consumption**

84W/per panel

**IP65 Rated Connections Power/Data**

Power-PowerLock In/Out; DataLock In/Out

**CONTROL SYSTEM****Control Mode**

Nova Star Synchronous System with Control via DVI

**Frame Update Frequency**

50-75Hz

**Scan Mode**

1/15

**Refresh Rate**

3840Hz

**Support Input**

Composite, S-Video, Component, VGA, DVI, HDMI, HD\_SDI

**Control Distance**

Ethernet Cable <120m or Fiber Optic>120m

**Support VGA Mode**

1024 x 768, 1280 x 1024, 1600 x 1200, 1920 x 1280

**Brightness Correction**

Pixel, Module, Cabinet

**ENVIRONMENTAL****Operating Temp / Humidity**

Fahrenheit: -4 + 104 / Celsius: -20 + 40/ 10-90% (No Condensation)

**Operating Life / MTBF**

50,000 Hours / 5,000 Hours

**Protection Level**

IP65 Front / IP54 Back

**Out of Control Rate**

<0.02%

## **DRESSING ROOMS**

Access to dressing rooms is through the door stage right.

2 x Star Dressing Rooms

These include private bathrooms and showers

2 x Small Dressing Rooms (4 people)

These do NOT include private bathrooms and showers

3 x Chorus Dressing Rooms (10-12 people)

These do NOT include private showers or bathrooms

## **Wardrobe Room**

Wardrobe is typically located in a multi-purpose room that measures 14' x 16'.

The washers and dryers are accessed by stairs in the wardrobe room. The venue has two (2) washers and two (2) dryers. The washer/dryer room is 9'6" x 13'. This can also be used for wardrobe if necessary.

2 x Steamers

3 x Irons

## **STAGE DIMENSIONS**

Apron to Back Wall Columns 31'6" Apron

to Back Wall 33'5"

Curtain Line to Back Wall Columns 23'9" Curtain

Line to Back Wall 25'8"

Curtain Line to Apron 7'0" Center Line

to Stage Left 39'0" Center Line to Stage

Right 32'4"

Stage Floor is unsprung and is covered in black Masonite

## **Proscenium Dimensions**

Height 31'0"

Width 50'0"

Stage Opening with House Legs 40'0"

## **Orchestra Pit**

Height to Auditorium Level 30"

Height to Stage Level 42"

Widest width distance 13'

Length 50'7"

Apron Overhangs Pit 43" Stairs at the end of the dressing room hallway on stage right access Orchestra Pit.

## **Grid**

Stage to Grid 66'4"

Stage to Ceiling 67'3"

Grid Level to Ceiling

Grid to Beam 5'6"

Grid to Ceiling 7'4"

Maximum Trim Height to Grid for Linesets 56'8"



### **Access to Stage from Auditorium**

There are permanent stairs on the DSR and DSL corners of the stage. Removable floor sections to extend the stage out to the auditorium walls can cover these.

### **Auditorium Seat Removal**

The two rows (AA and BB) on the Orchestra pit can be removed in sets of two or three.

The first two rows (CC and DD) in the Orchestra can be removed in sets of two and three.

Additional seat removals in the Orchestra are possible and are approved on a show by show basis. No seats in the balcony can be removed.

### **Loading In**

Loading Door Dimensions

Height 10'9"

Width 5'6"

Storage of Equipment

Empty cases can be lined up off stage or outside. For large shows it may be necessary to load some empty cases back onto trucks.

### **Truck Loading and Parking**

Truck parking at street and stage level. There is minimal push distance from truck parking to load in door.

## **SOFT GOODS**

**Main Drape** (guillotine-style opening only) Color Plum

Main Drape is velour with 100% fullness

Height 33'0"

Width 55'0"

IN trim for Main Drape batten 32'6"

### **Main Moveable Teaser**

Color Plum

Main Teaser is velour with 100% fullness

Height 15'0"

Width 55'0"

Maximum Opening Height 31'0"

Minimum Opening Height 16'0"

### **Legs**

Black Velour with 0% fullness

Number of Pairs 4

Height 32'

Width 12'

### **Borders**

Black Velour with 0% fullness

Number of Borders 4

Height 12'

Width 55'

### **Backdrops**

Full Blacks are Black Velour with 0% fullness

Number (2 panels) 1

Height of each panel 30'

Width of each panel 30'

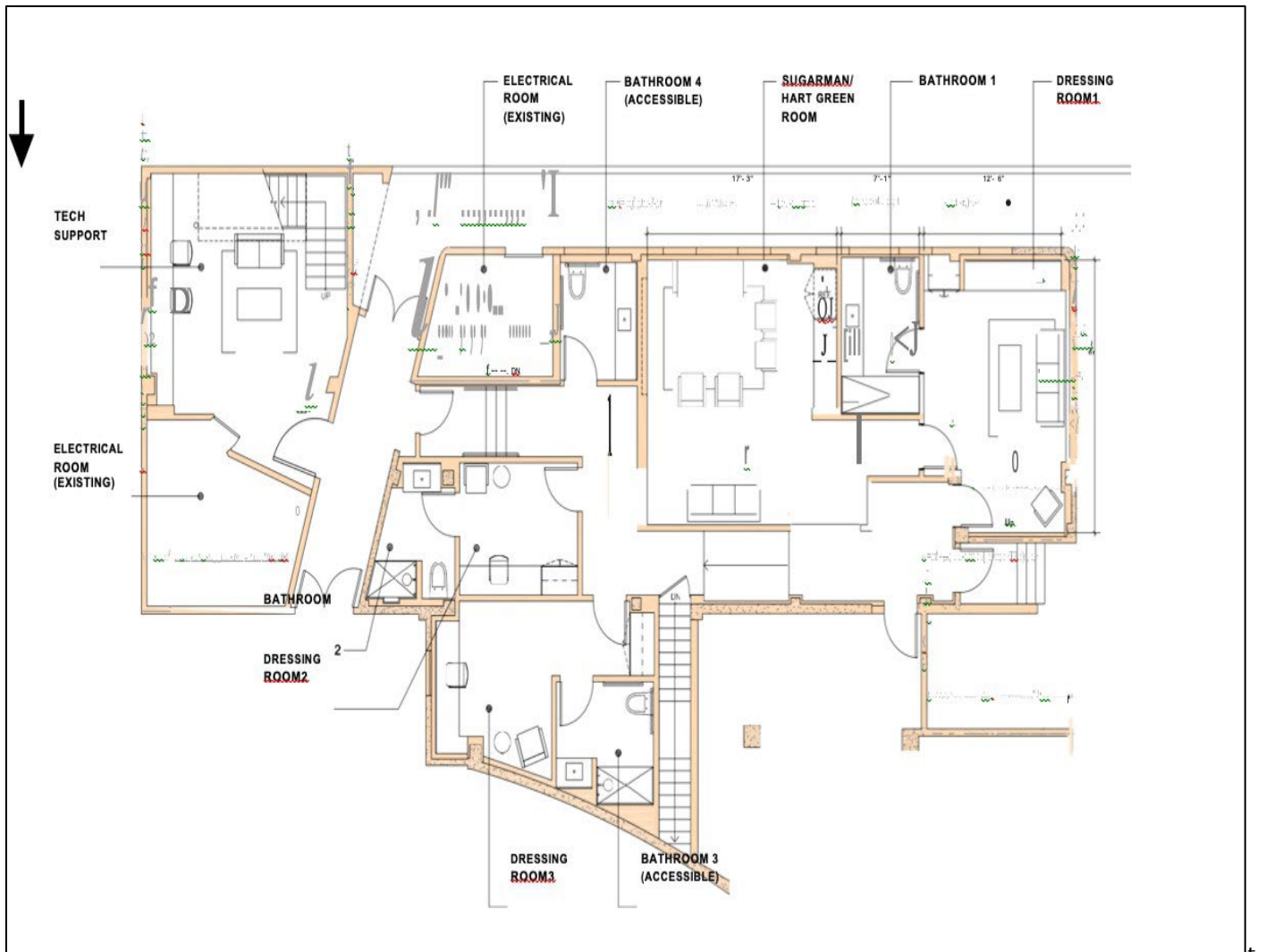
Total coverage for full black 60'x 30'

Cyclorama is seamless muslin

Height 30'

Width 55'

## DRESSING ROOM MAP



Stage right entrance